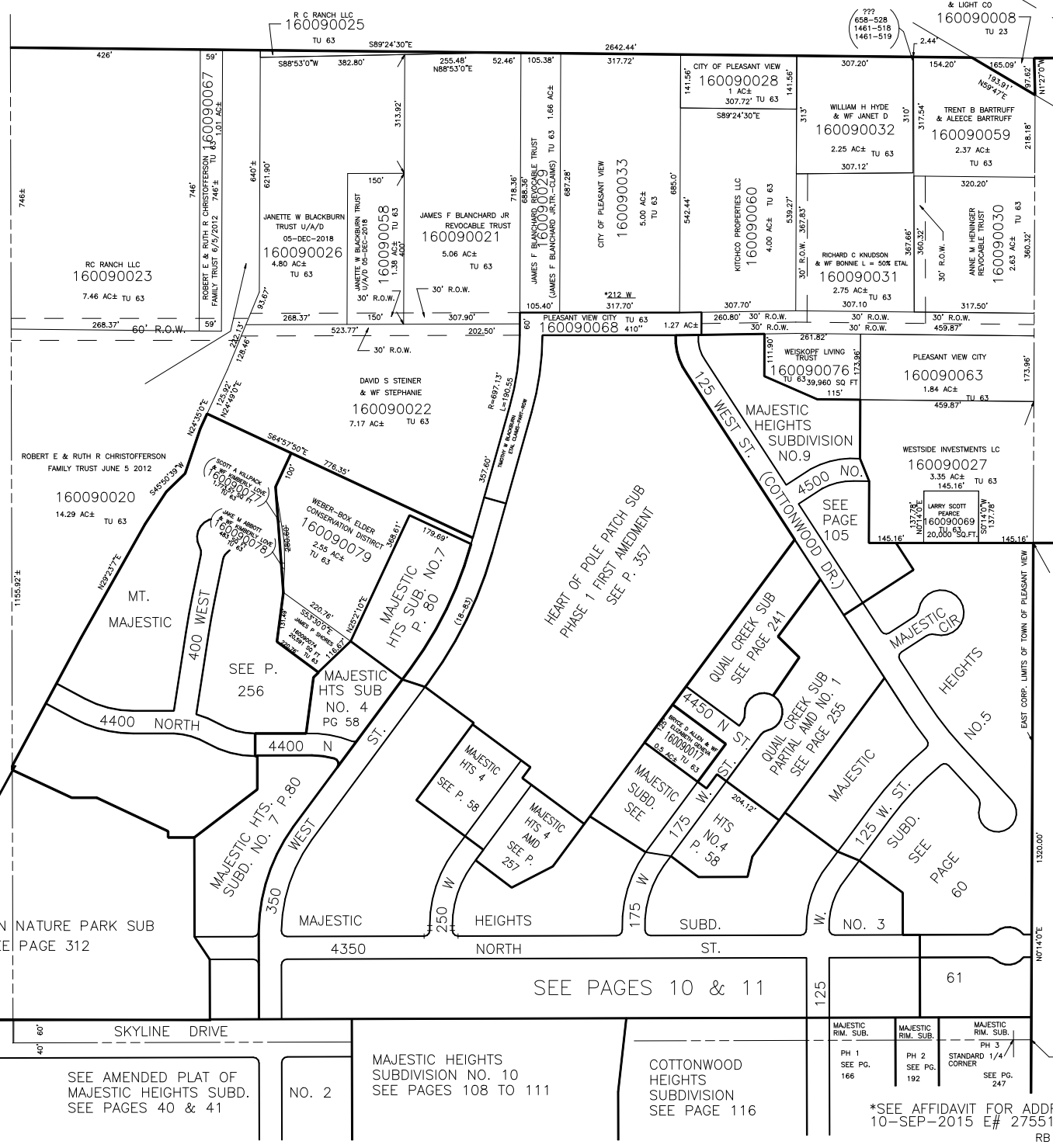


S.W. 1/4  
SECTION 17, T.7N., R.1W., S.L.B. & M.

IN WEBER COUNTY AND PLEASANT VIEW CITY

TAXING UNIT: 23, 63

SCALE 1" = 200'



UTAH POWER & LIGHT CO  
160090008  
TU 23

RC RANCH LLC  
160090023  
7.46 AC± TU 63

JANETTE W. BLACKBURN TRUST U/A/D  
05-DEC-2018  
160090026  
4.80 AC± TU 63

JAMES F. BLANCHARD JR. REVOCABLE TRUST  
160090021  
5.06 AC± TU 63

CITY OF PLEASANT VIEW  
160090028  
1 AC± TU 63

WILLIAM H HYDE & WF JANET D  
160090032  
2.25 AC± TU 63

TRENT B BARTRUFF & ALEECE BARTRUFF  
160090059  
2.37 AC± TU 63

ROBERT E & RUTH R CHRISTOFFERSON FAMILY TRUST JUNE 5 2012  
160090020  
14.29 AC± TU 63

DAVID S STEINER & WF STEPHANIE  
160090022  
7.17 AC± TU 63

WEISKOPF LIVING TRUST  
160090076  
TU 63 39,960 SQ FT

PLEASANT VIEW CITY  
160090063  
1.84 AC± TU 63

WESTSIDE INVESTMENTS LC  
160090027  
3.35 AC± TU 63

LARRY SCOTT PEARCE  
160090069  
TU 63 20,000 SQ FT

SEE P 12

SEE P. 256

SEE PAGE 105

WADMAN NATURE PARK SUB  
SEE PAGE 312

SEE PAGES 10 & 11

SEE AMENDED PLAT OF MAJESTIC HEIGHTS SUBD.  
SEE PAGES 40 & 41

MAJESTIC HEIGHTS SUBDIVISION NO. 10  
SEE PAGES 108 TO 111

COTTONWOOD HEIGHTS SUBDIVISION  
SEE PAGE 116

\*SEE AFFIDAVIT FOR ADDRESS  
10-SEP-2015 E# 2755133